

Edrom Lodge

c/- Kiah Post Office, Eden NSW 2551
ABN: 689 475 737 06

Phone: 02 6496 1510
www.edromlodge.com.au

Tariffs - from 28/04/2010 (prices include GST)
Social groups ... Family holidays ... Seminars ... Special interest groups

Adults \$30.00 per person per night
Children (to 18 years) \$18.00 per person per night

A \$850 minimum charge applies per night.

A deposit of **\$300** is required at time of booking. Refundable on final day inspection.

Full payment required on arrival

No Eftpos or credit card facilities.

We require a list of all guest's names – including children on arrival.

As bookings at Edrom are regular, we must advise that arrival times cannot be earlier than 3pm and departure time cannot be later than 10am.

Please leave the lodge in the manner in which you found it.

Things to bring

- Your own bedding, including a bottom sheet even if you are using a sleeping bag.
- *If you do not bring a sheet, you must hire one @ \$6 per stay.*
- NB. All beds are single bunks. Edrom Lodge sleeps 68.
- Your own towels and toiletries.
- Insect repellent.
- Lighter gas guns for BBQs and stoves.
- Dishwashing detergent and tea towels.
- Fold up chair for outside use

Things NOT to bring

- Citronella Bamboo Burners, Candles, Incense, Mozzi Coils, etc

Due to the presence of native wildlife, pets are not allowed.

Cheers, Christine and Brian

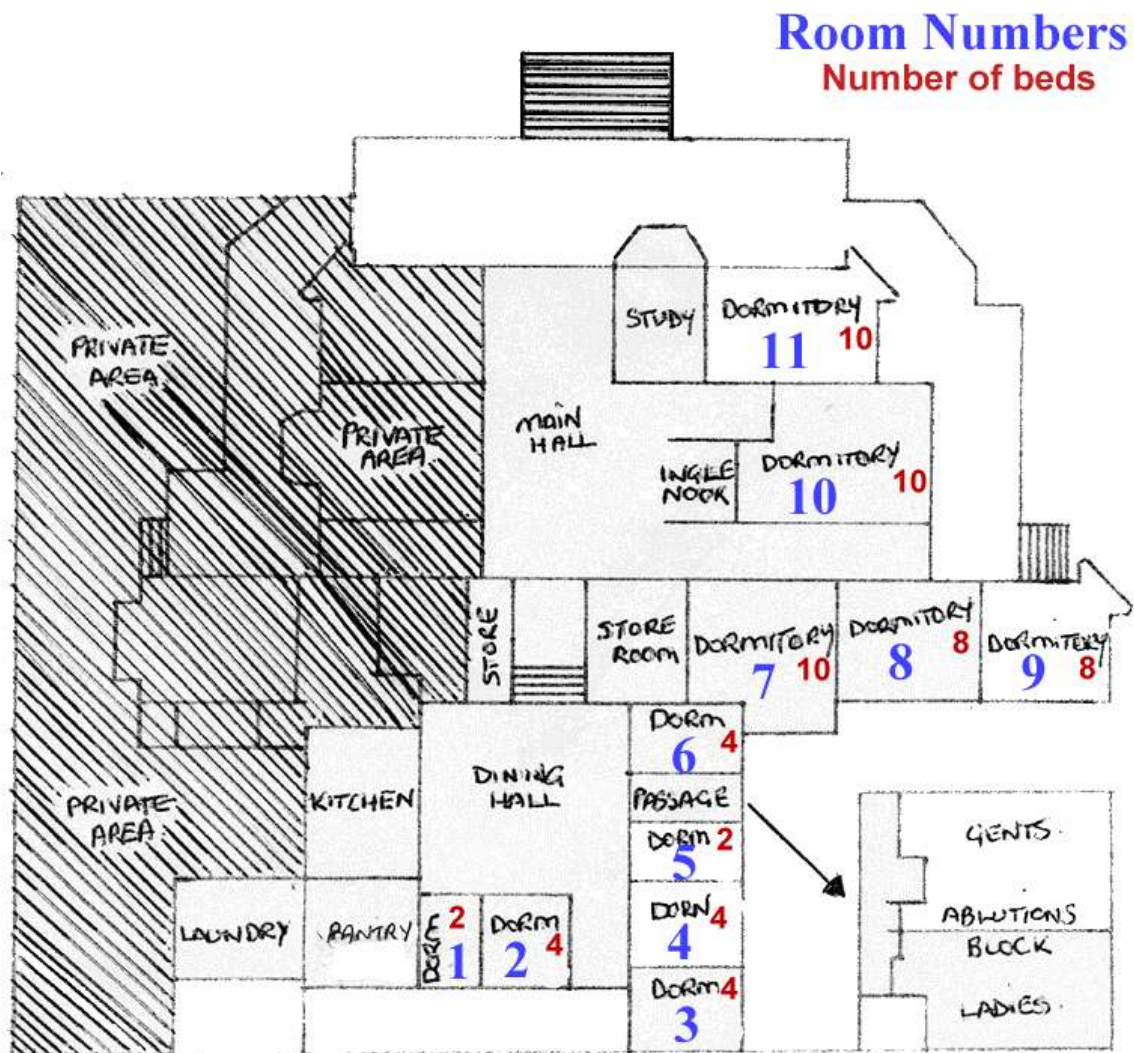
Edrom Lodge

c/- Kiah Post Office, Eden NSW 2551
ABN: 689 475 737 06

Phone: 02 6496 1510
www.edromlodge.com.au

To find us: From Eden, travel south along the Princes Highway (approx. 17 km) to the Green Cape Lighthouse sign on the left. Turn off highway and continue along sealed road for another 17 km until you see the Edrom Lodge signpost on your left.

Edrom Lodge
scale 1:250



There are 68 beds.

Please note there is No vehicle access to Edrom Beach - boat launching facilities are available at Eden or at nearby Fisheries Flat (8km). Canoes and kayaks can be carried down the hill.